



Minutes from historic downtown Hendersonville and only a short drive from Lake Lure, is Vista at Blacksmith Run—an exclusive Western North Carolina mountain property designed for residential development. Blacksmith Run’s secluded mountain lifestyle and four season climate turns an ordinary day into an unforgettable experience. With convenient access to all of Western North Carolina’s treasures, this quiet mountain property was developed for those who appreciate the best that life has to offer.

[www.vistadevelopers.com](http://www.vistadevelopers.com)

(\*) **Optional Features**

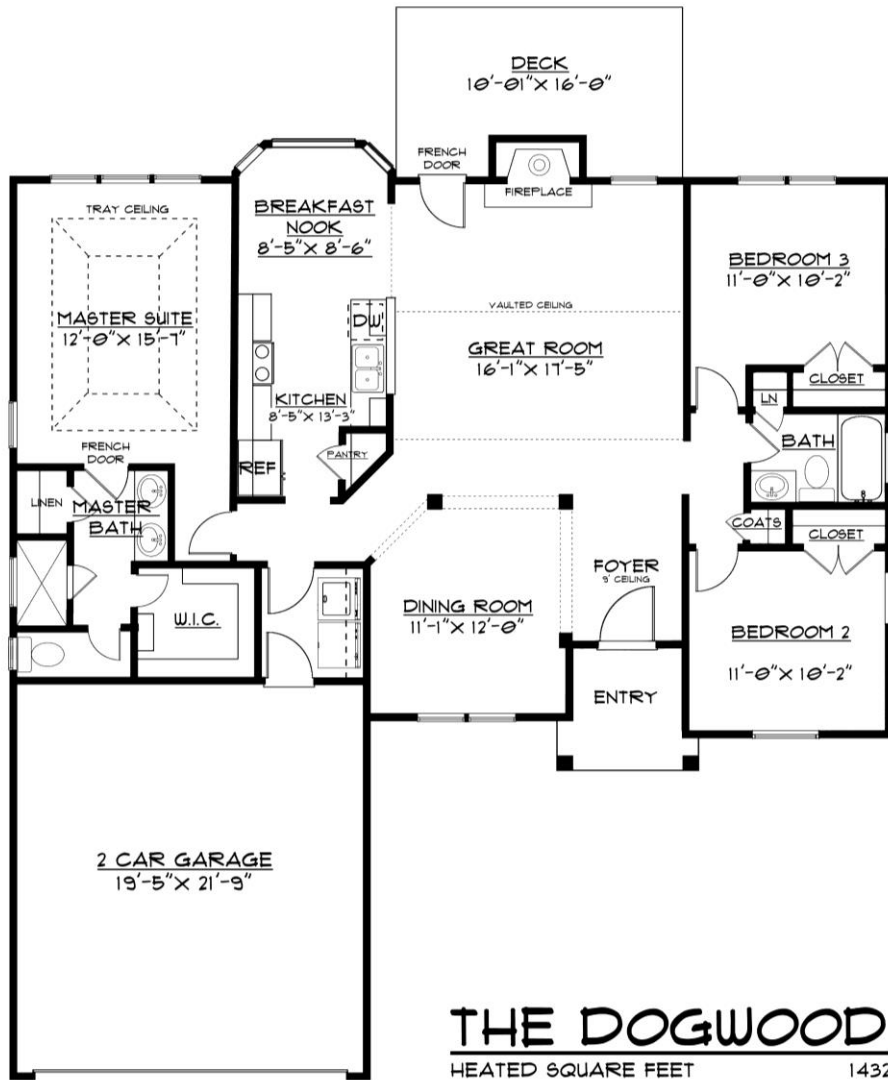
### Description

Cottage Style  
3 Bedrooms  
2 Baths  
2 Car Garage

### Square Footage

Total Sq Ft:	1432 SF
Garage:	420 SF
Deck:	160 SF

\*\*Above elevation is for illustration purposes only. Actual colors, materials, landscaping, and other details can change at any time\*\*



**THE DOGWOOD**  
HEATED SQUARE FEET 1432

## INCLUDED FEATURES

### Home Exterior

- \* Jeld Wen Double Hung Low Maintenance Windows. Easy Maint. Grid between the glass. Tilt sash removable.
- \* Low Maint. Cement Siding
- \* Fiberglass Exterior Doors.
- \* 2x6 Exterior Wall
- \* Lifetime Warranty on Asphalt Shingles

### Home Interior

- \* 9' Ceilings w/ smooth Finish
- \* Vaulted Great Room
- \* Tray Ceiling in Master BR
- \* All wood cabinets with solid maple dovetail drawers and soft close hinges/slides.
- \* Granite counter tops
- \* Quality Plumbing fixtures.
- \* Raised height elongated bowl toilets.
- \* Hardwood Flooring in Main Areas
- \* Ceramic Tile Flooring in all wet areas
- \* Tile Shower enclosure in Master Bath.
- \* Carpet in Bedrooms
- \* Interior Trim: 3 1/4" Casing and wide 5 1/4" Base molding standard.
- \* Walls to have two coats of paint. Walls flat finish and Trim semi-gloss.
- \* Wire shelving in closets

\*Due to space constraints on brochure the plan renderings may appear slightly different from scaled drawings.

### HVAC & Electrical

- \* 14 SEER Heat Pump w/ dual zoning where applicable
  - \* Ceiling fans provided in all Bedrooms. Light & Fan switched separately.
  - \* Stainless Whirlpool all Electric Appliances
  - \* Attractive Standard lighting packages.
  - \* 36" ventless gas fireplace with mantle and stone face finishes
  - \* Satin nickel, chrome, oil rubbed bronze finishes available for all hardware.
- Includes towel bars and toilet paper holders for baths.