

THE FONTANA



Minutes from historic downtown Hendersonville and only a short drive from Lake Lure, is Vista at Blacksmith Run—an exclusive Western North Carolina mountain property designed for residential development. Blacksmith Run's secluded mountain lifestyle and four season climate turns an ordinary day into an unforgettable experience. With convenient access to all of Western North Carolina's treasures, this quiet mountain property was developed for those who appreciate the best that life has to offer.

DESCRIPTION

Craftsman Style
2 Bedrooms
2 Bathrooms
2 Car Garage

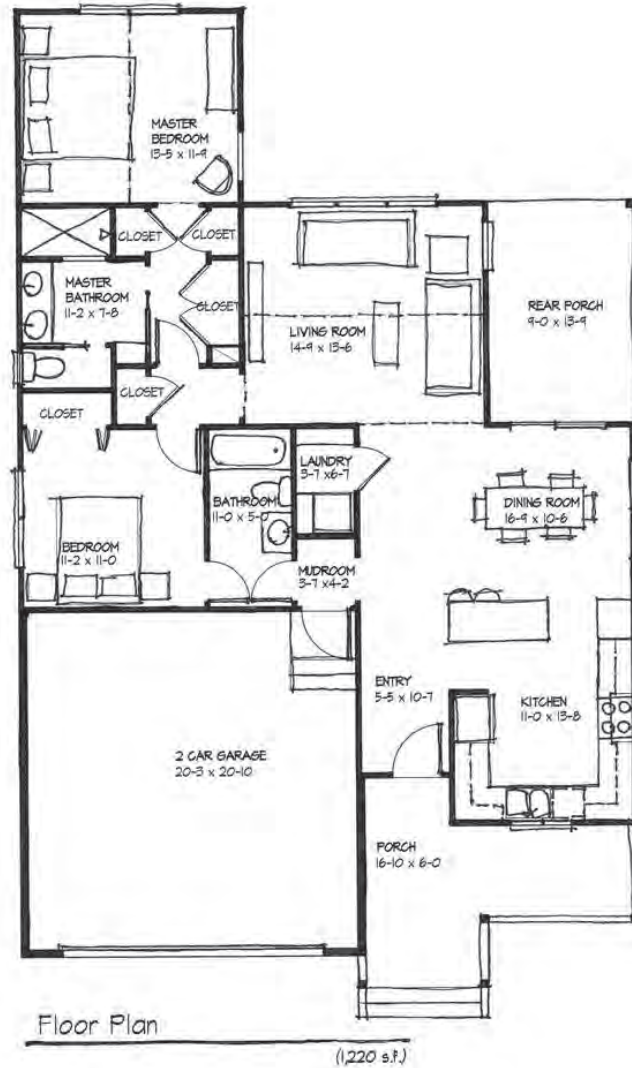
HEATED SQUARE FOOTAGE

1,220 Square Feet

OVERALL DIMENSIONS

38' 0" x 60' 8"

THE FONTANA



THE FONTANA

- Craftsman Style
- 2 Bedrooms
- 2 Bathrooms
- 2 Car Garage

TOTAL HEATED

1,220 Square Feet

DIMENSIONS

38' 0" x 60' 8"