

# THE BLACKBERRY



Minutes from historic downtown Hendersonville and only a short drive from Lake Lure, is Vista at Blacksmith Run—an exclusive Western North Carolina mountain property designed for residential development. Blacksmith Run's secluded mountain lifestyle and four season climate turns an ordinary day into an unforgettable experience. With convenient access to all of Western North Carolina's treasures, this quiet mountain property was developed for those who appreciate the best that life has to offer.

**TOTAL HEATED : 1,640 SQ. FT.**

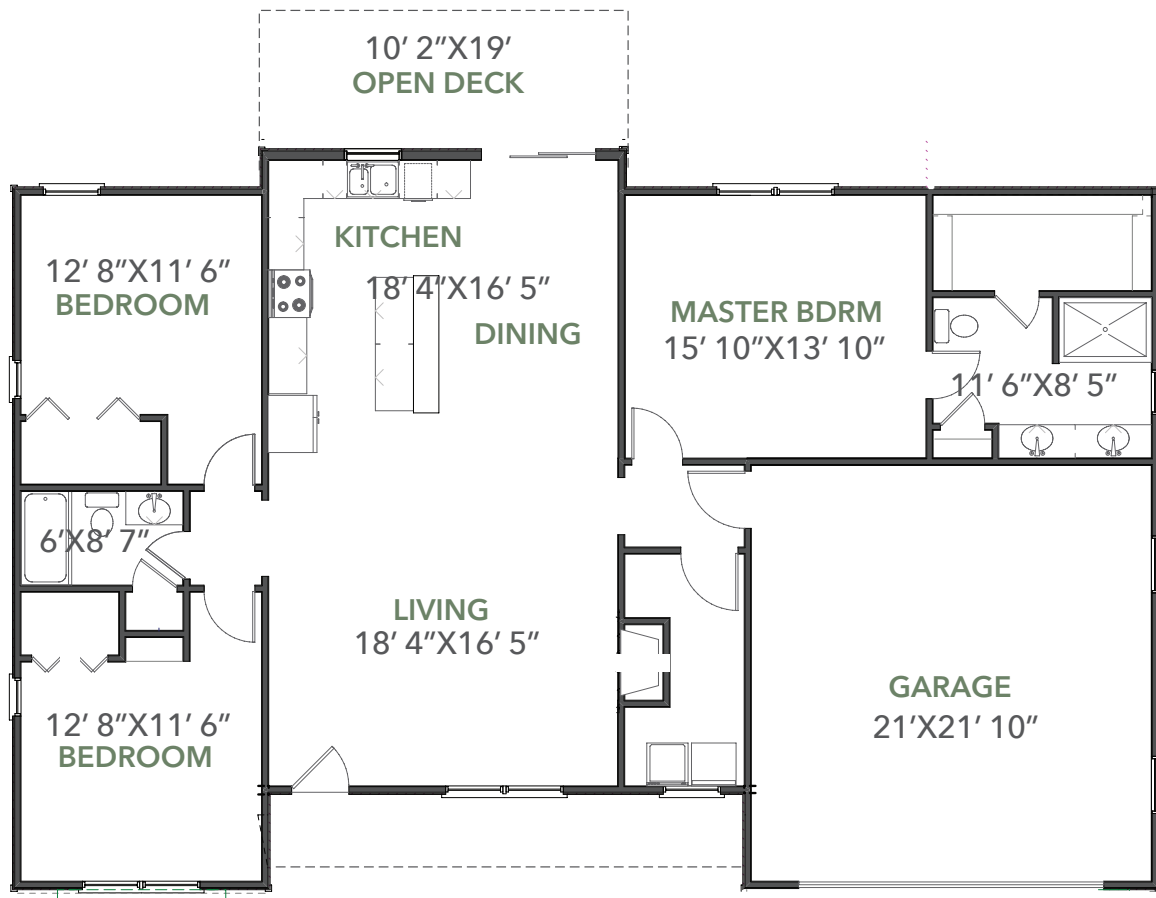
**FRONT COVERED PORCH : 125 SQ. FT.**

**REAR OPEN PORCH : 190 SQ. FT.**

**BEDROOMS : 3**

**BATHS : 2**

# THE BLACKBERRY



## SPECIFICATIONS

- 1,640 heated square feet all on one level
- 3 bedrooms, 2 baths
- Master on the main level
- Attached 2 car garage
- Gas furnace heating
- Gas fireplace
- Large open deck on rear
- Covered porch on front

## EXTERIOR FEATURES

- Jeld-Wen low maintenance windows
- Double hung windows makes cleaning easy
- Low maintenance cement siding
- Low maintenance exterior trim
- Covered porch on front and rear
- Stained cedar shakes
- Fiberglass doors for easy maintenance

## INTERIOR FEATURES

- 9' ceilings in all bedrooms
- 12' ceilings in living, dining and kitchen area
- Open floor plan
- Hardwoods in common areas, carpet in bedrooms
- Full tile shower in master
- Delta plumbing fixtures
- Walk-in laundry room