

# THE KIMBERLY



Minutes from historic downtown Hendersonville and only a short drive from Lake Lure, is Vista at Blacksmith Run—an exclusive Western North Carolina mountain property designed for residential development. Blacksmith Run's secluded mountain lifestyle and four season climate turns an ordinary day into an unforgettable experience. With convenient access to all of Western North Carolina's treasures, this quiet mountain property was developed for those who appreciate the best that life has to offer.

[www.vistadevelopers.com](http://www.vistadevelopers.com)

## DESCRIPTION

Craftsman Style  
4 Bedrooms  
3 Bathrooms  
2 Car Garage

## SQUARE FOOTAGE

Car port: 341 sq. ft.  
Garage: 693 sq. ft.  
Main: 1764 sq. ft.  
Bonus: 484 sq. ft.



# THE KIMBERLY

## SPECIFICATIONS:

2248 Heated Space

Master BR on Main

2 Spare Bedrooms on Main

Large Bonus room with Bath  
(4th Bedroom)

Attached 2 Car Garage

Gas Fireplace

Heat Pump System

## EXTERIOR FEATURES

Jeld-Wen Double Hung  
Low Maintenance Windows

Cement Siding

Covered front porch

Large Covered Rear Porch  
with Patio

Fiberglass entry doors

## INTERIOR FEATURES

9' Ceilings

Vaulted GR

Open Floor Plan

Granite Countertops Throughout

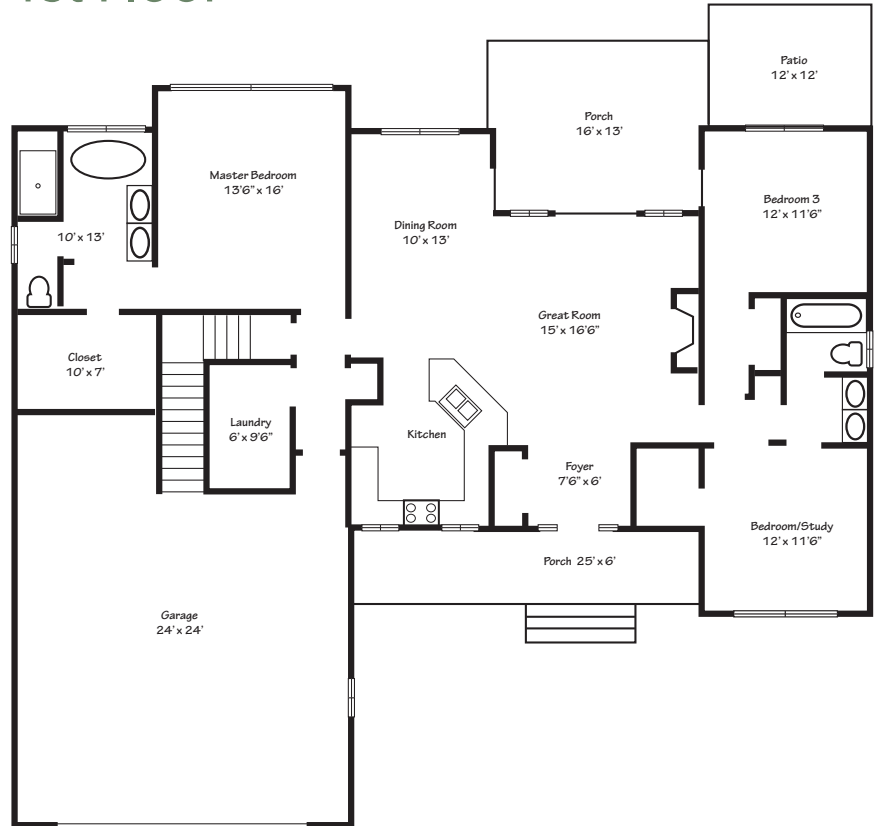
Laundry on Main

Hardwood in Main living Areas

Carpet in Bedrooms

Ceramic Tile in Wet areas.

## 1st Floor



## 2nd Floor

